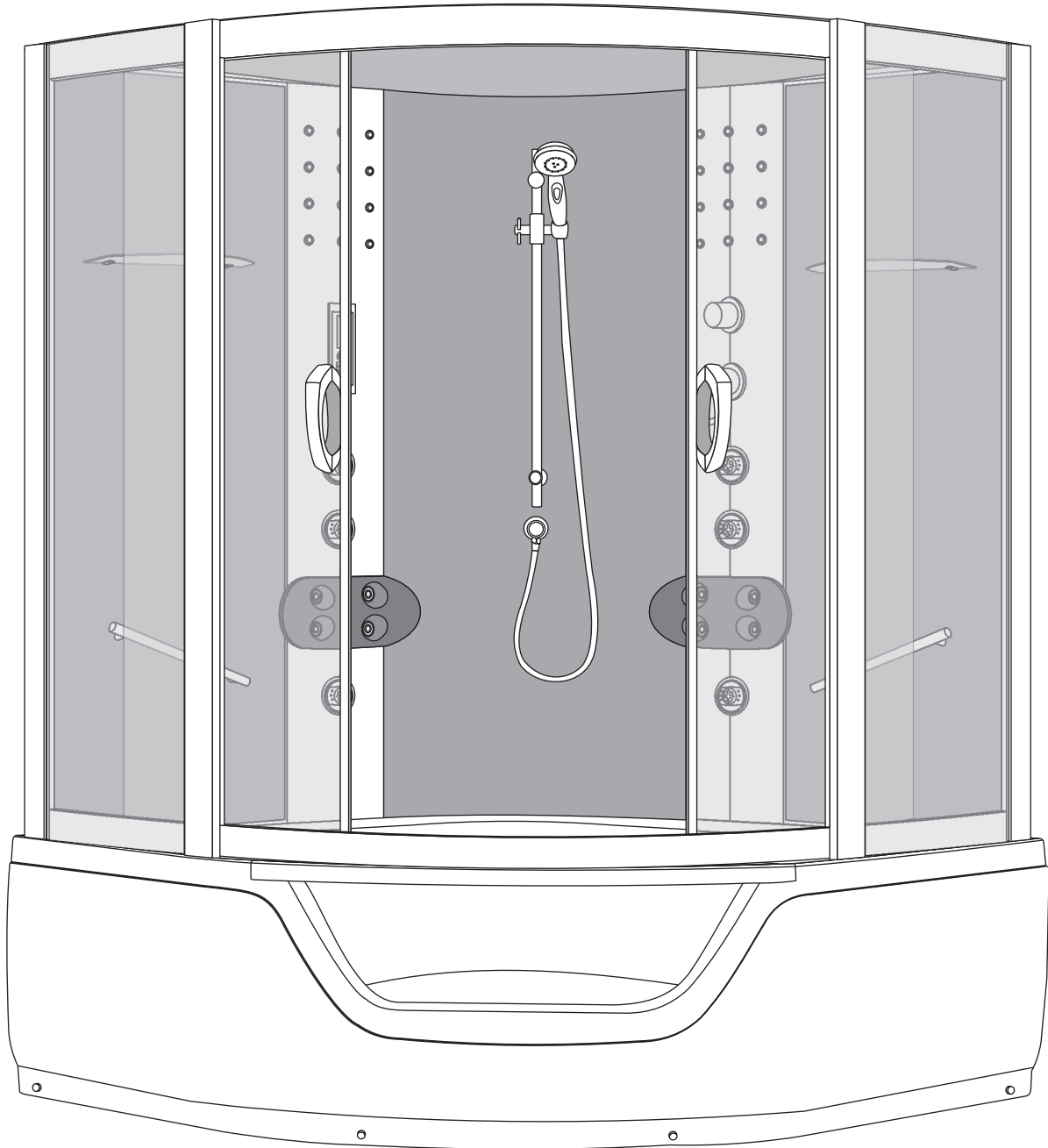


8426

Installation Instructions



SIZE:150*150*220CM

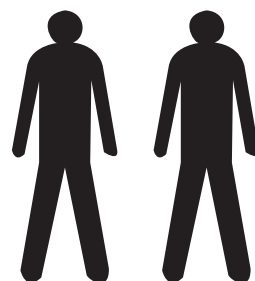
8426

Installation Instructions

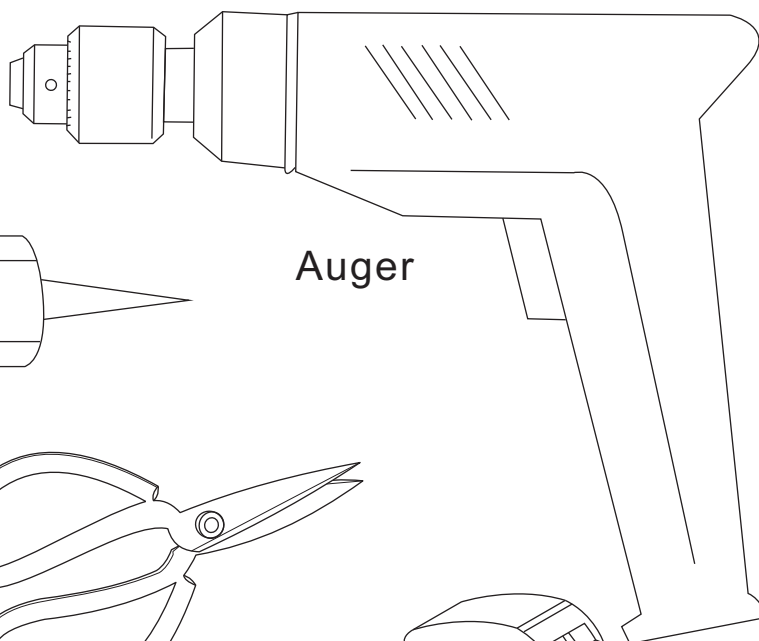
TOOLS REQUIRED(NOT SUPPLIED)

when you're ready to start,make sure that you have the following tools to hand,plenty of space and a clean dry area for assembly.

Two people are needed. Please note:although these instructions are comprehensive,We always recommend that a technically competent installer should undertake installation.

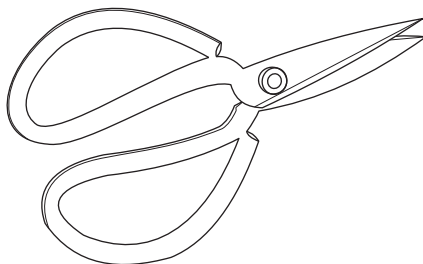
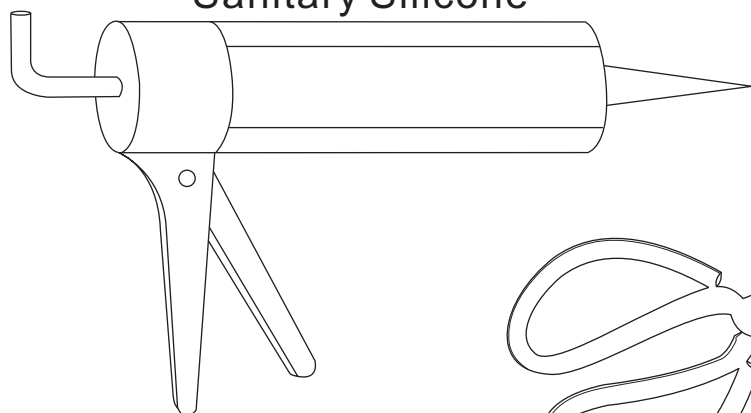


Drill beat head
5. 5mm

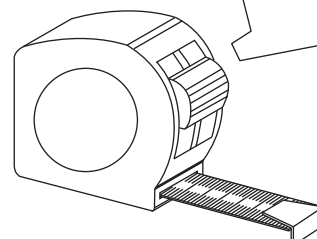


Auger

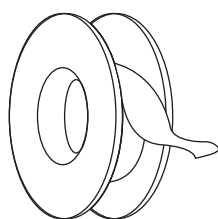
Sanitary Silicone



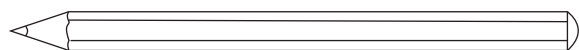
Forfex



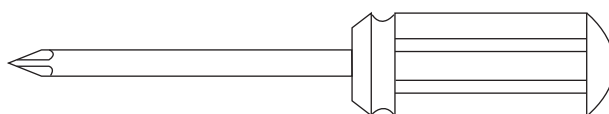
Tape measure



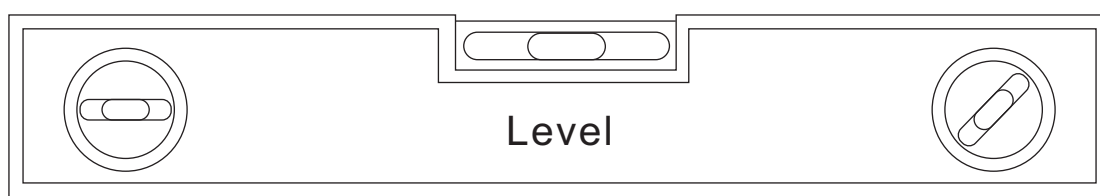
PTFE tape



Pencil



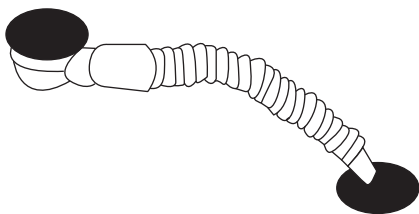
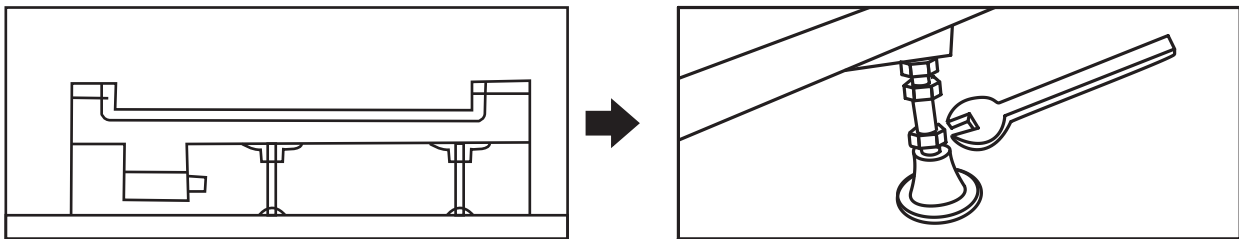
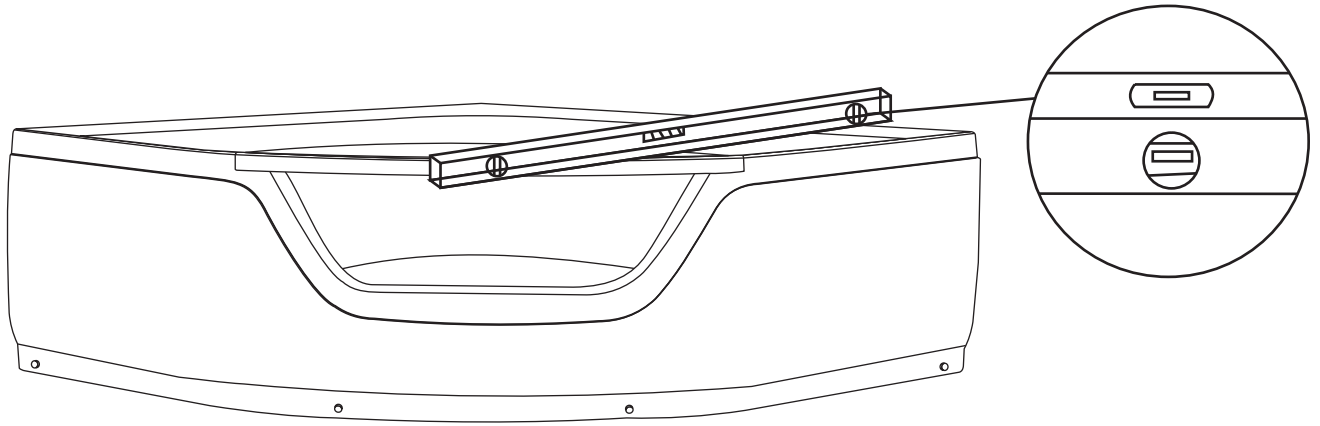
Magnetic crosshead schrewdriver



Level

8426

Installation Instructions



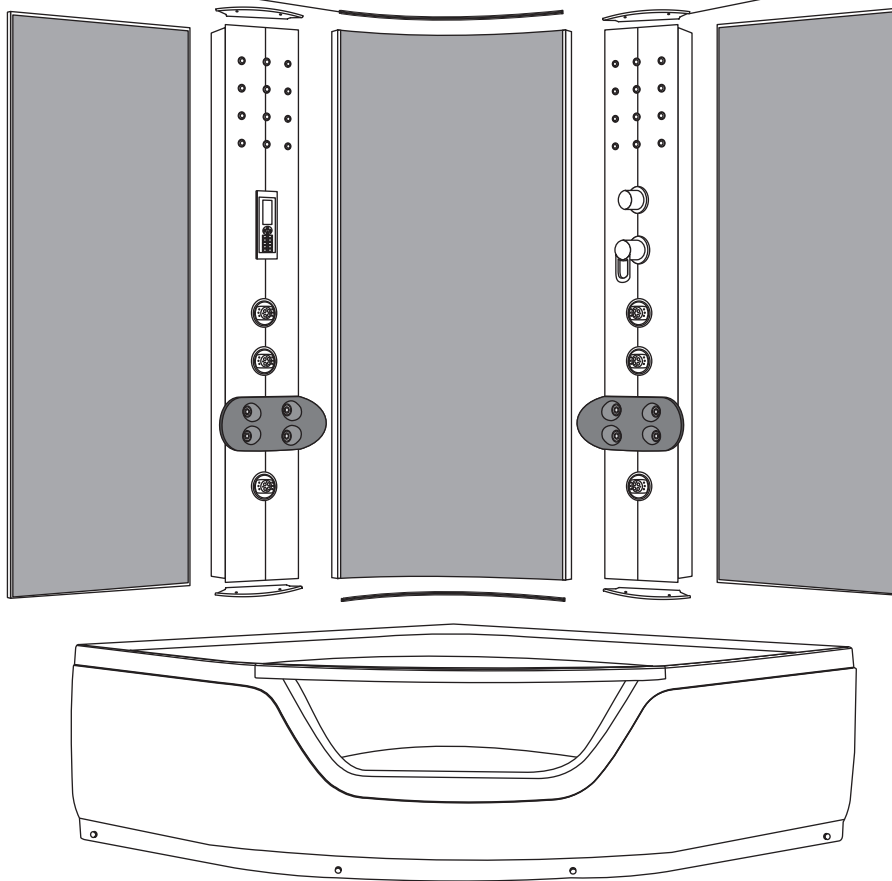
Lift the rear part of bottom basin,
and then insert one end of the pipe
into the drainage hole

8426

Installation Instructions

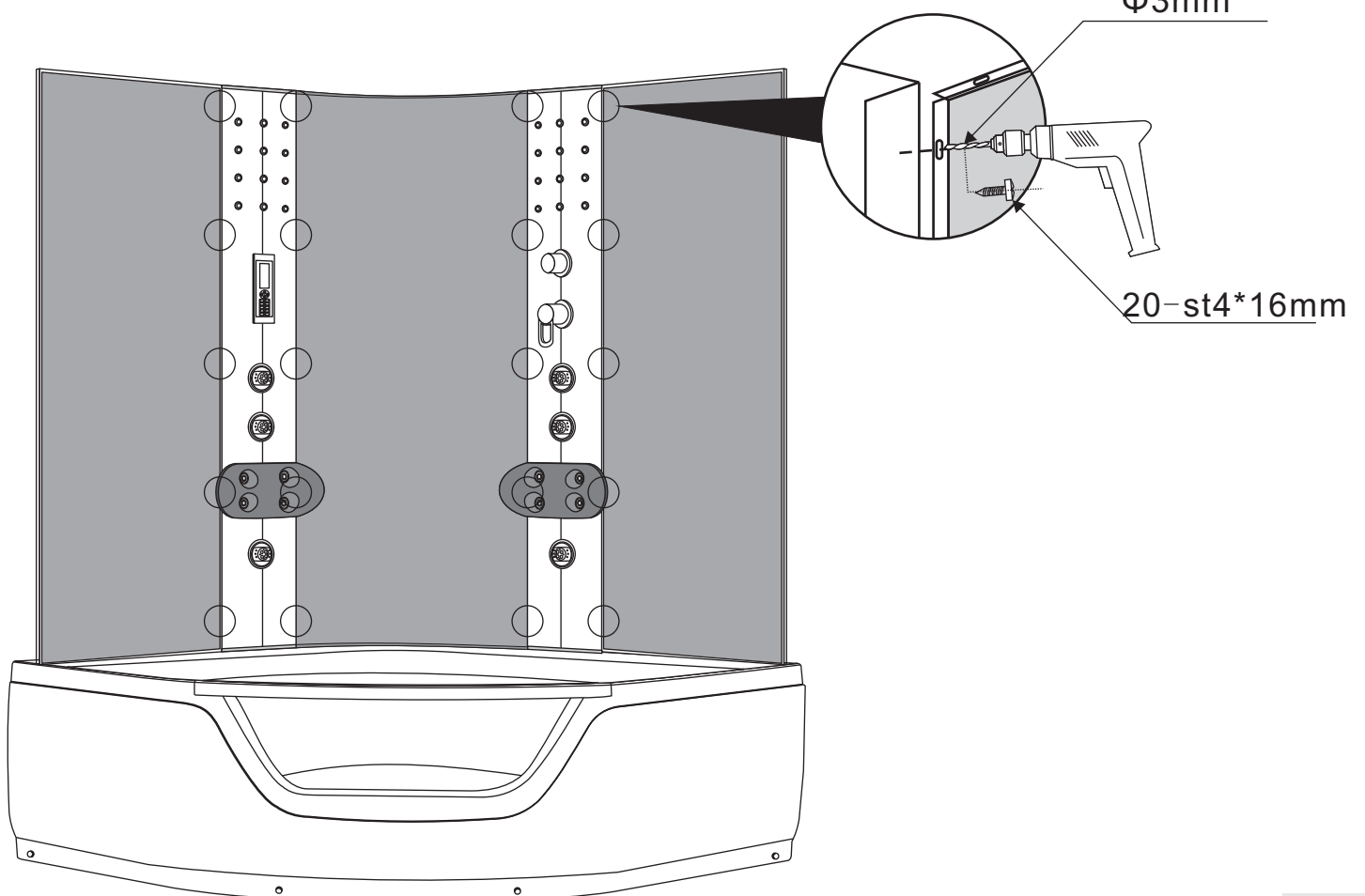
U-shape seal

Cover for panel



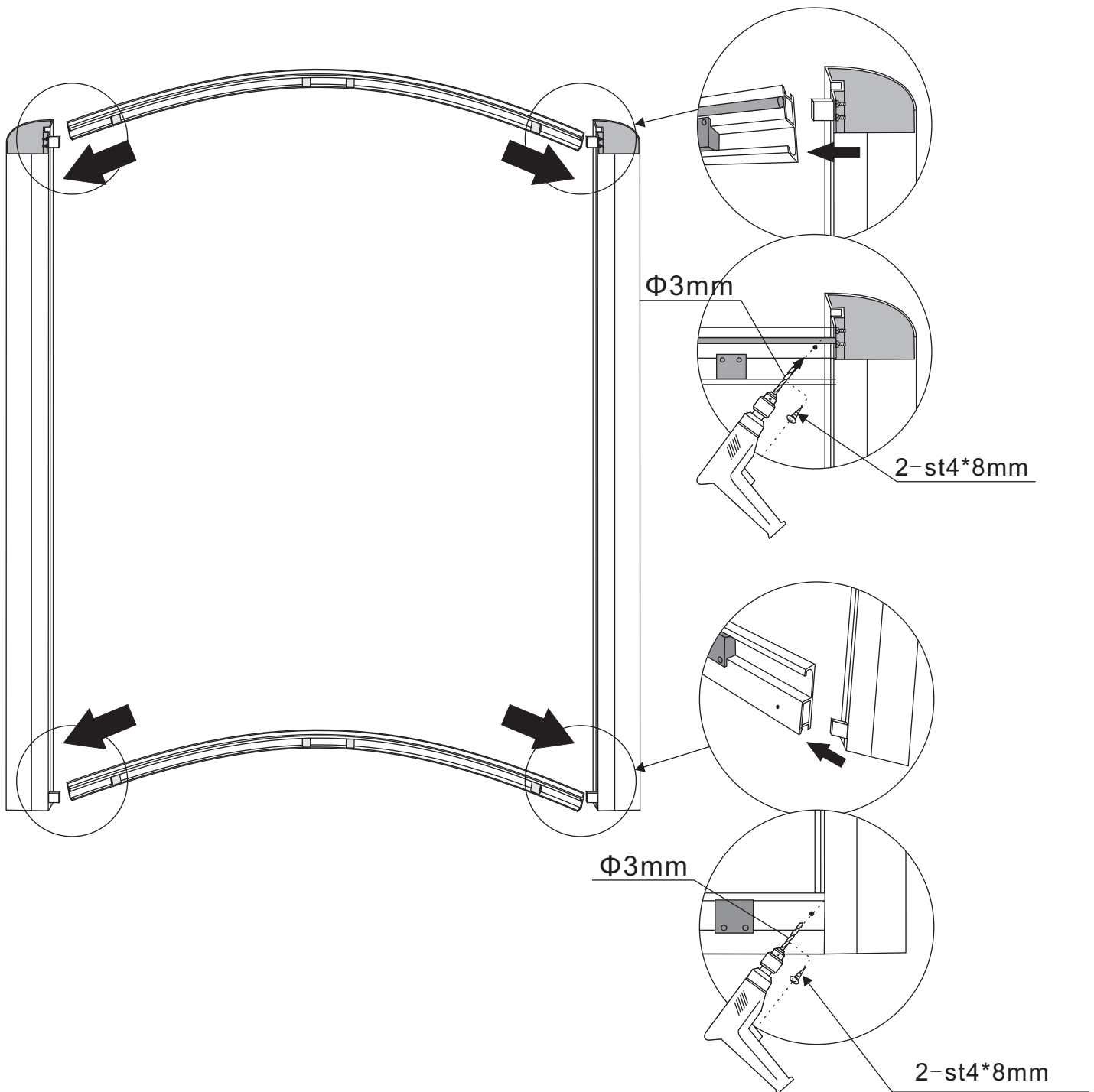
$\Phi 3\text{mm}$

20-st4*16mm



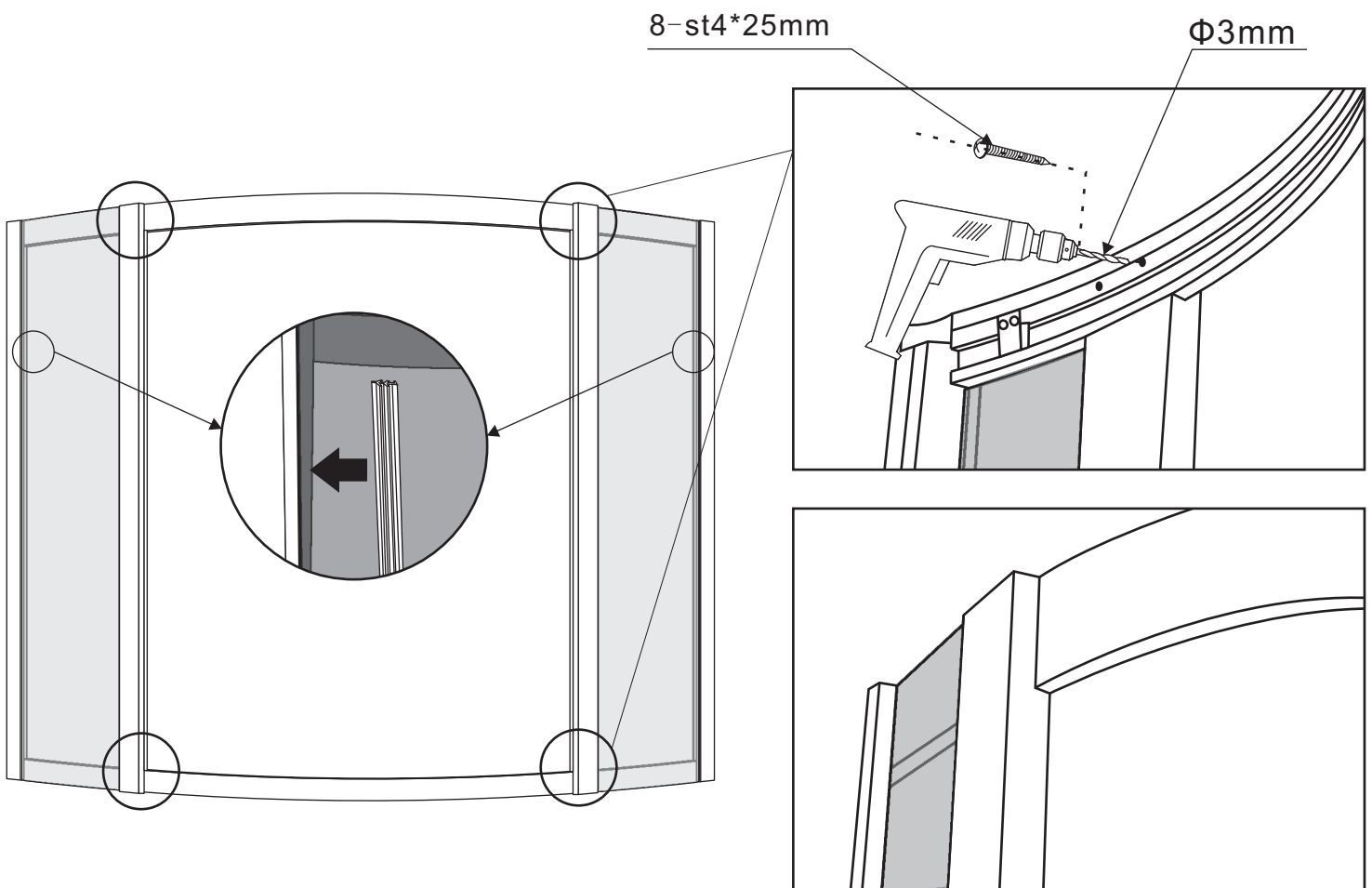
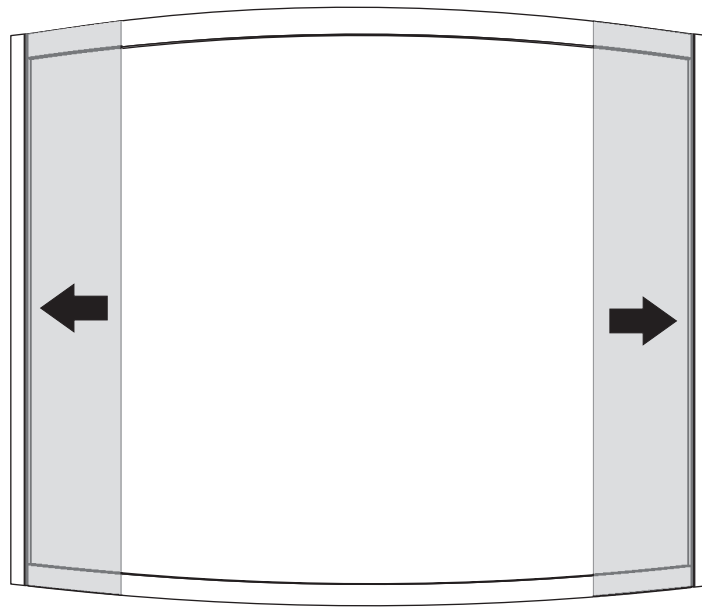
8426

Installation Instructions



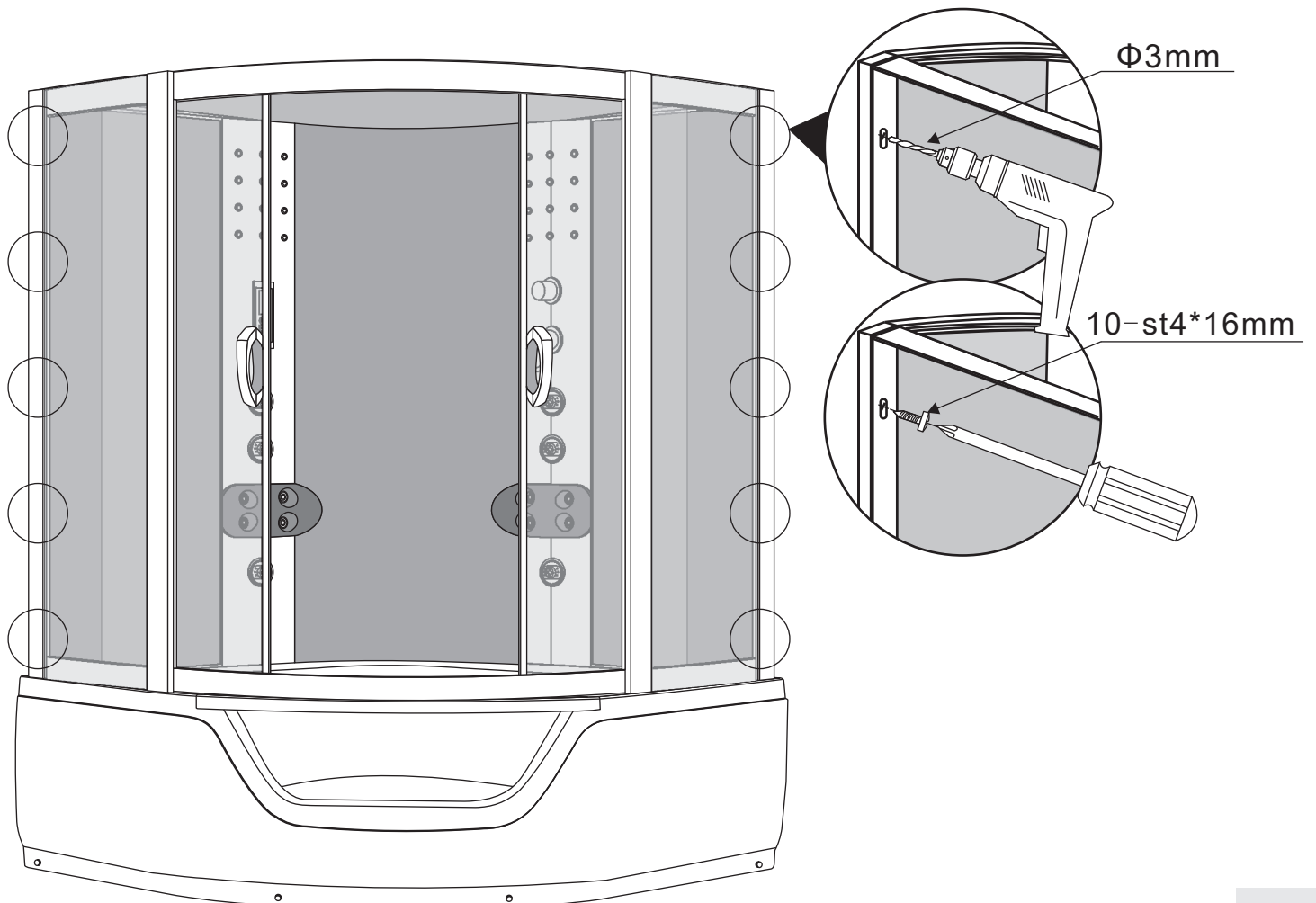
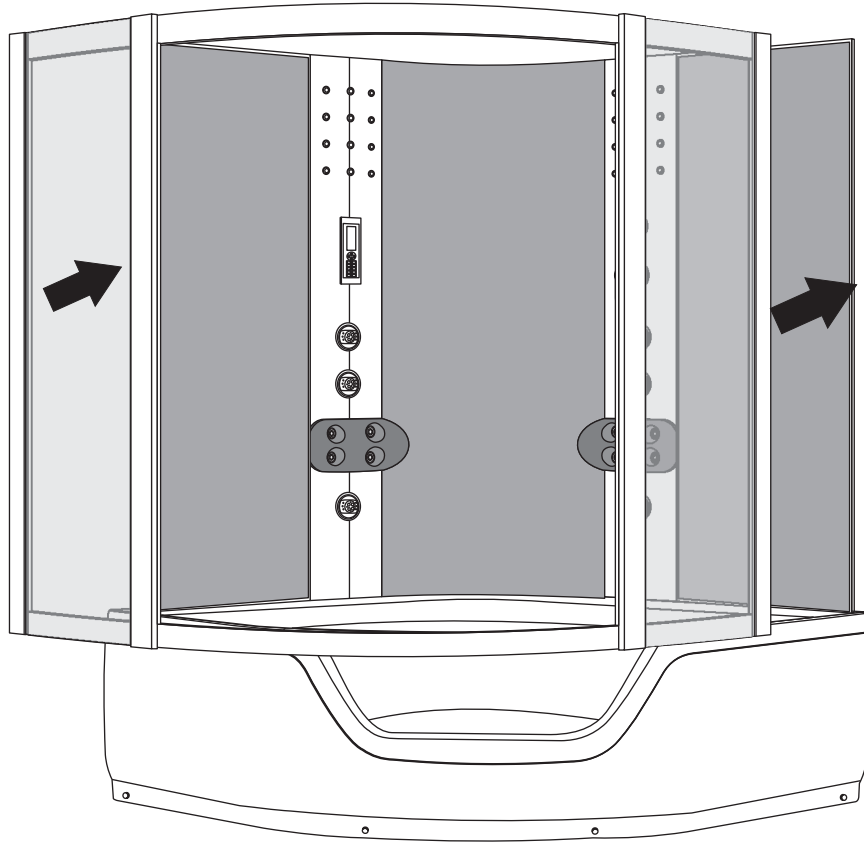
8426

Installation Instructions



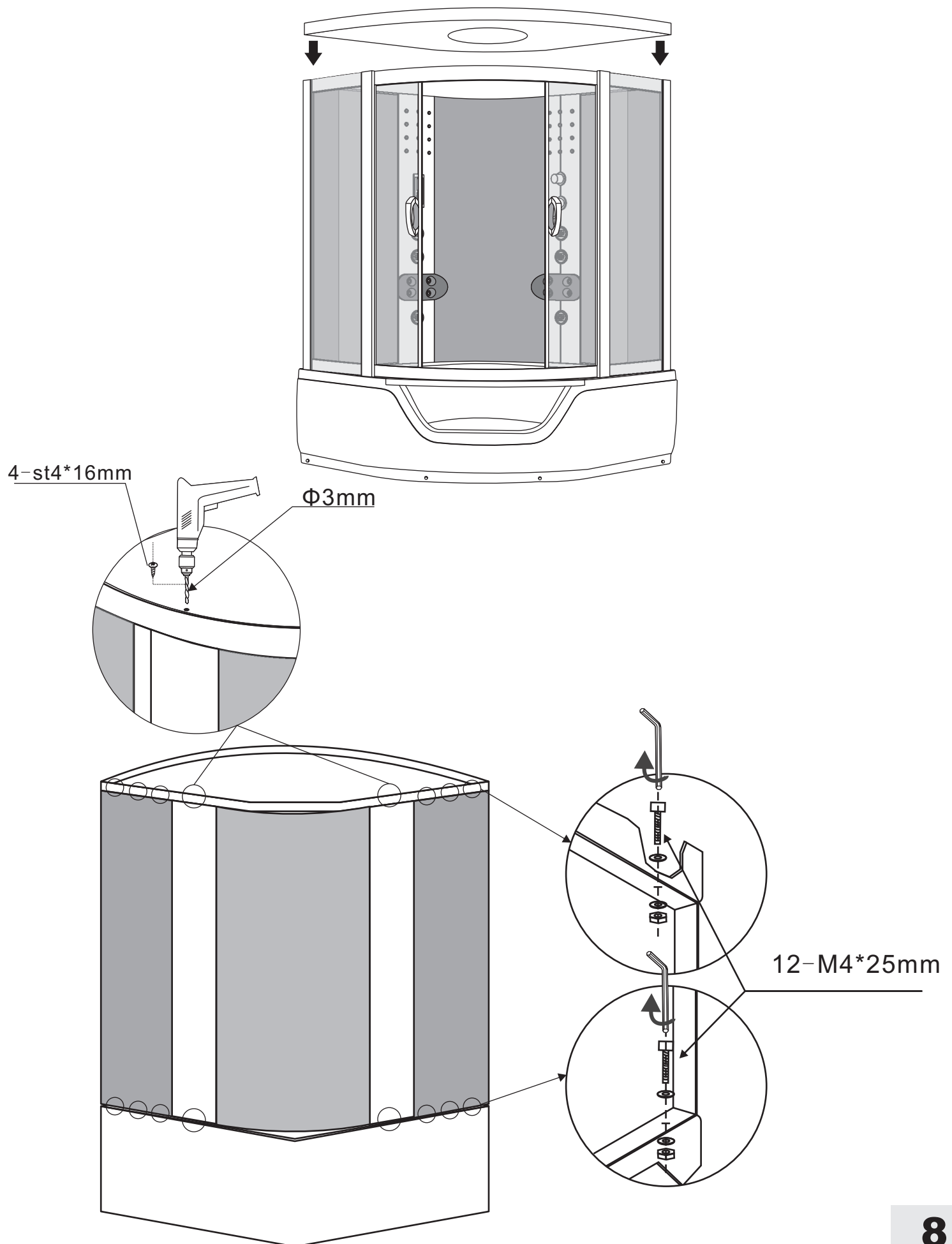
8426

Installation Instructions



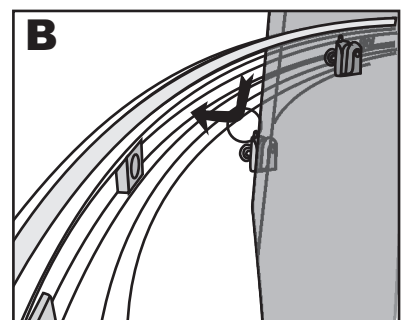
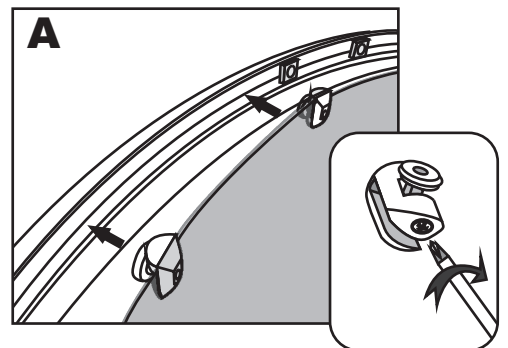
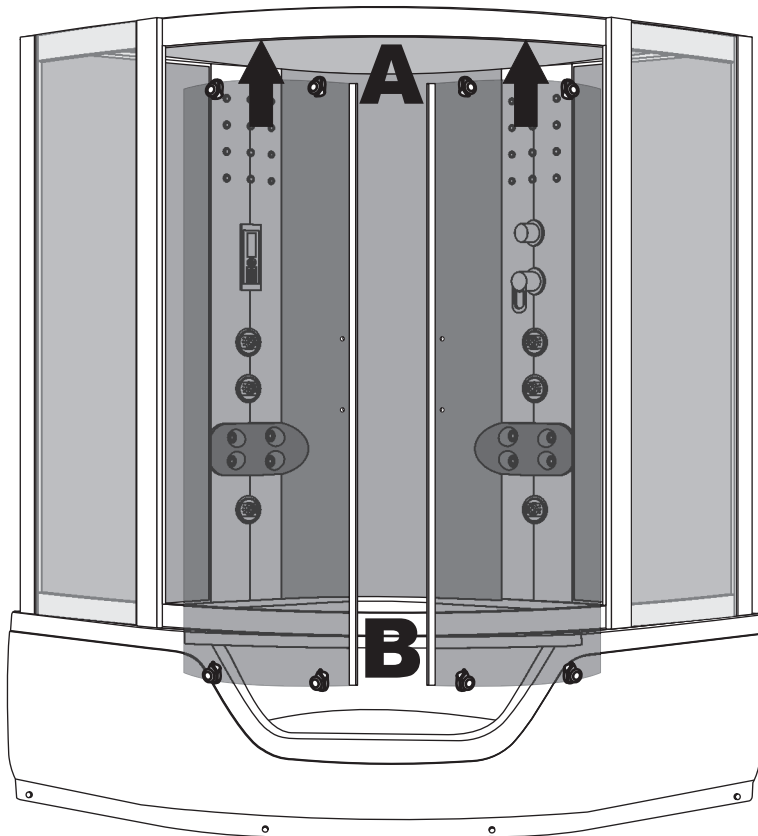
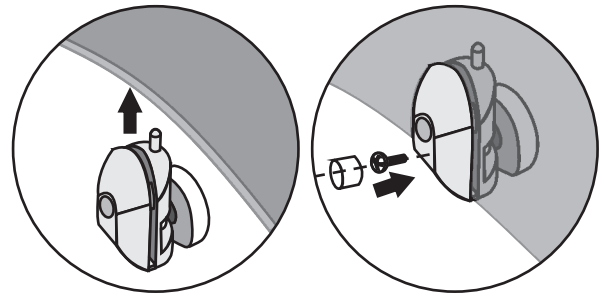
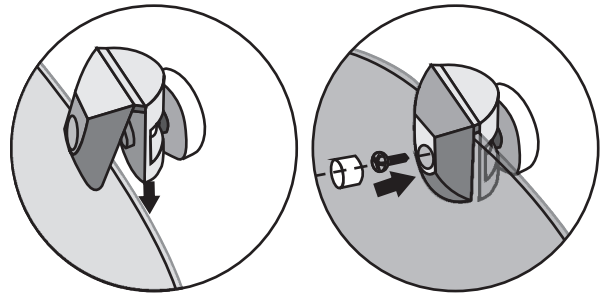
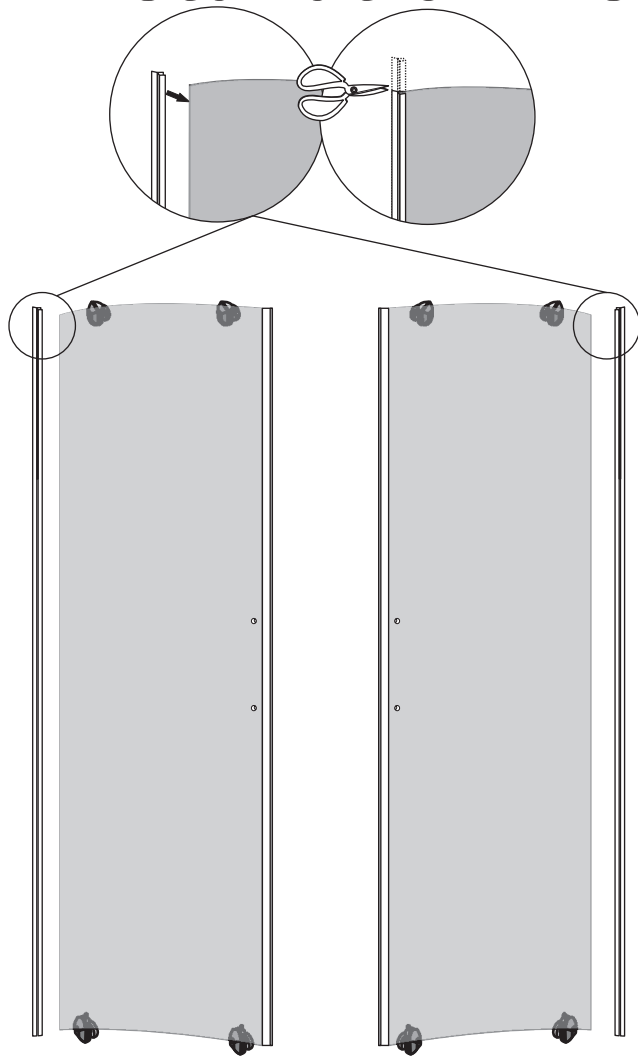
8426

Installation Instructions



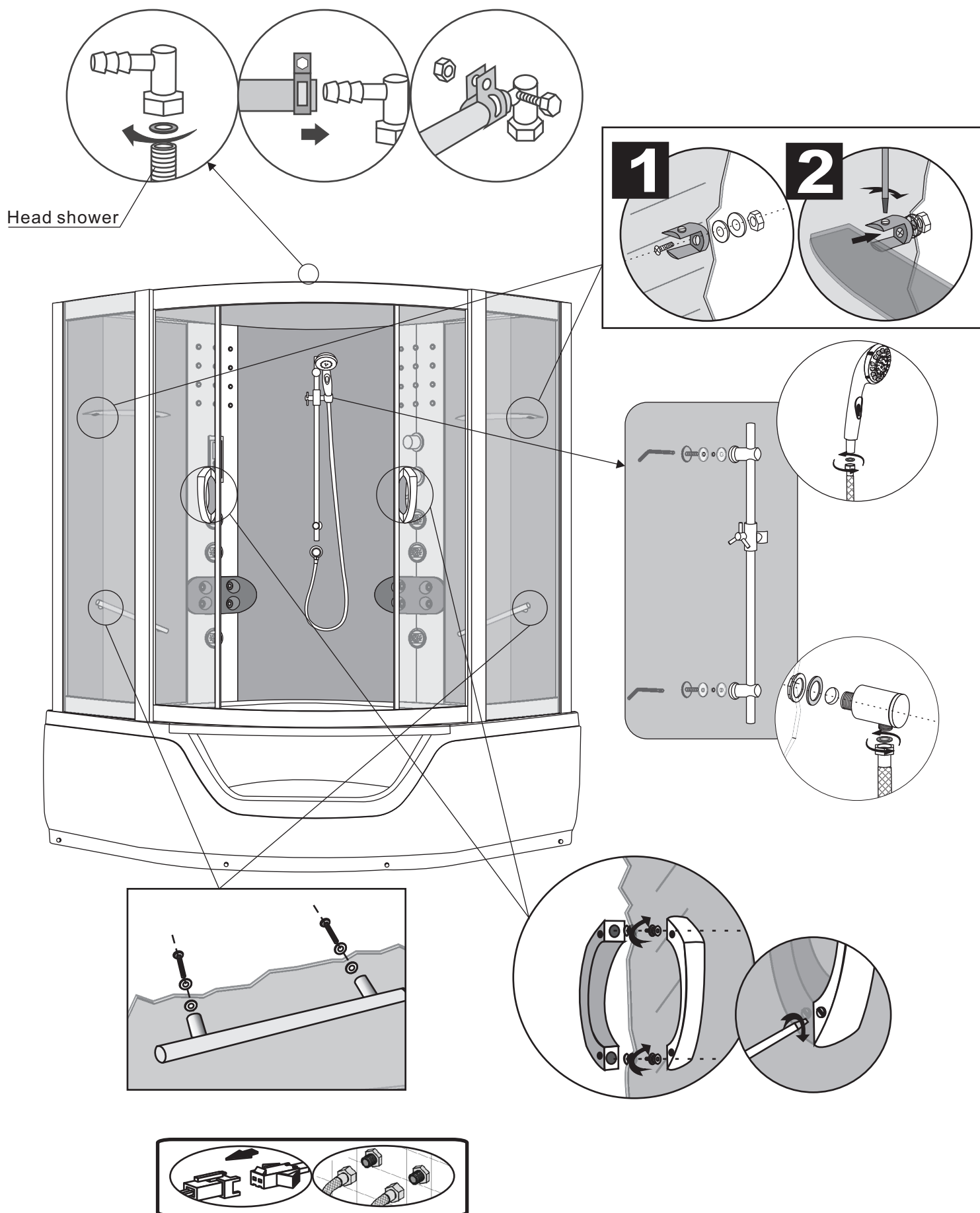
8426

Installation Instructions



8426

Installation Instructions



connect the electrical wire of bungalow, power and etc. correctly, connect the hose of head shower, hot water hose and cold water hose correctly, put the antenna to the top.